


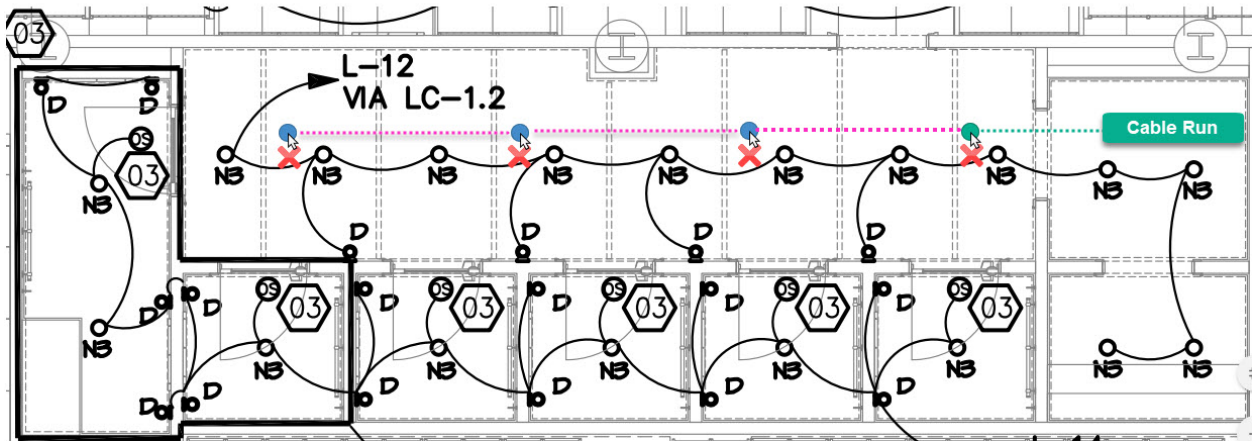


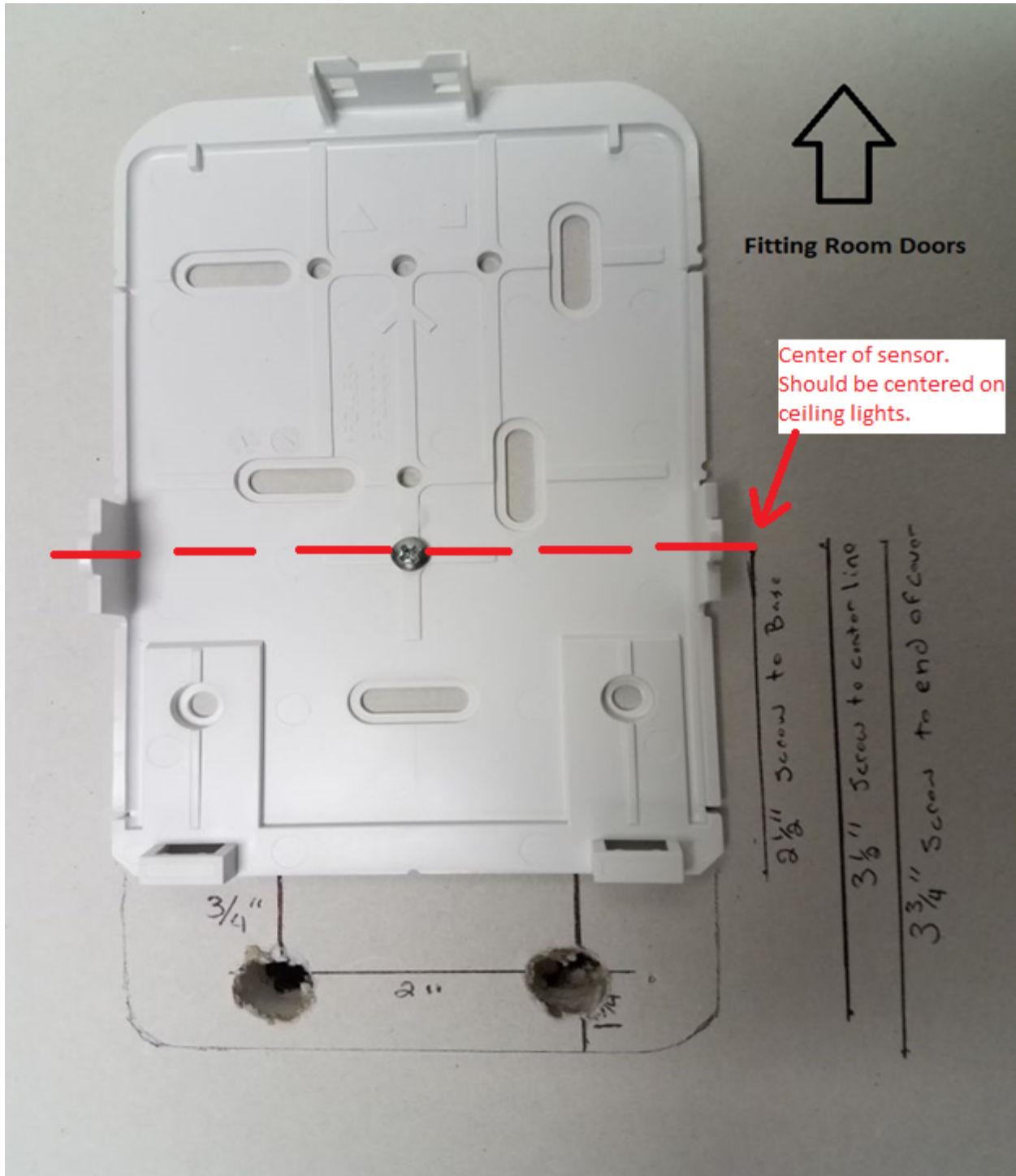
The Traffic Counters will be mounted in the same row as the lights.
Centered between the light fixture and beam

The cables will need to be dropped 3 1/2 inches off center away from the dressing rooms.

-  Cable Run Dropped here
-  Patch Cables daisy chained dropped here
-  Traffic Counter



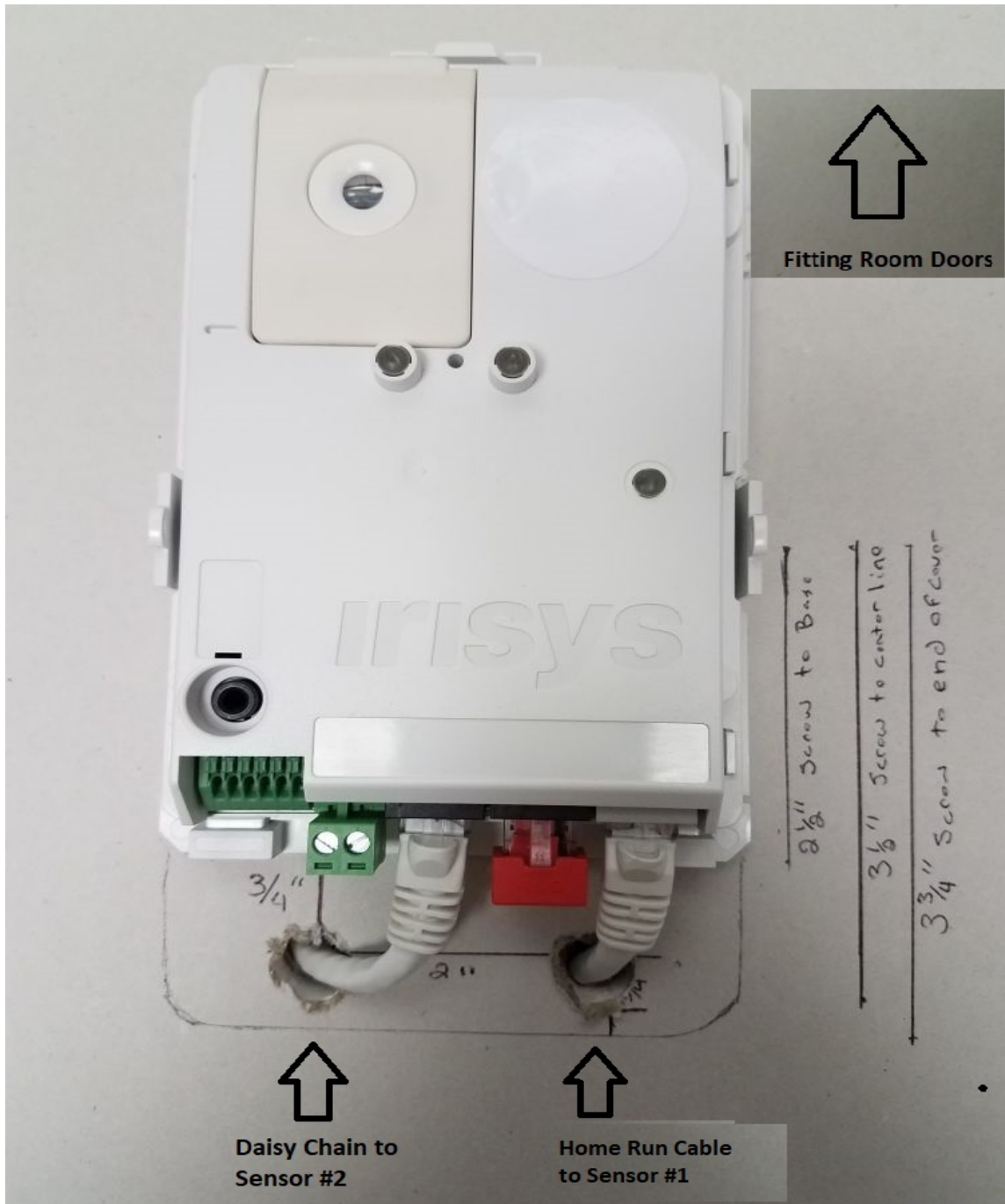
Mounting Base and Cable Holes



Sensor Installed in Mounting Base



Sensor installed in Mounting Base and cables connected



Sensor Cover in Place



Sensors installed equally spaced



Sensors and Ceiling Completed

